

# Institutional Adaptability:

Navigating uncertainty,  
complexity and change

Erica Crawford Boettcher  
University of British Columbia  
BC Land Summit  
May 22, 2009

# Outline

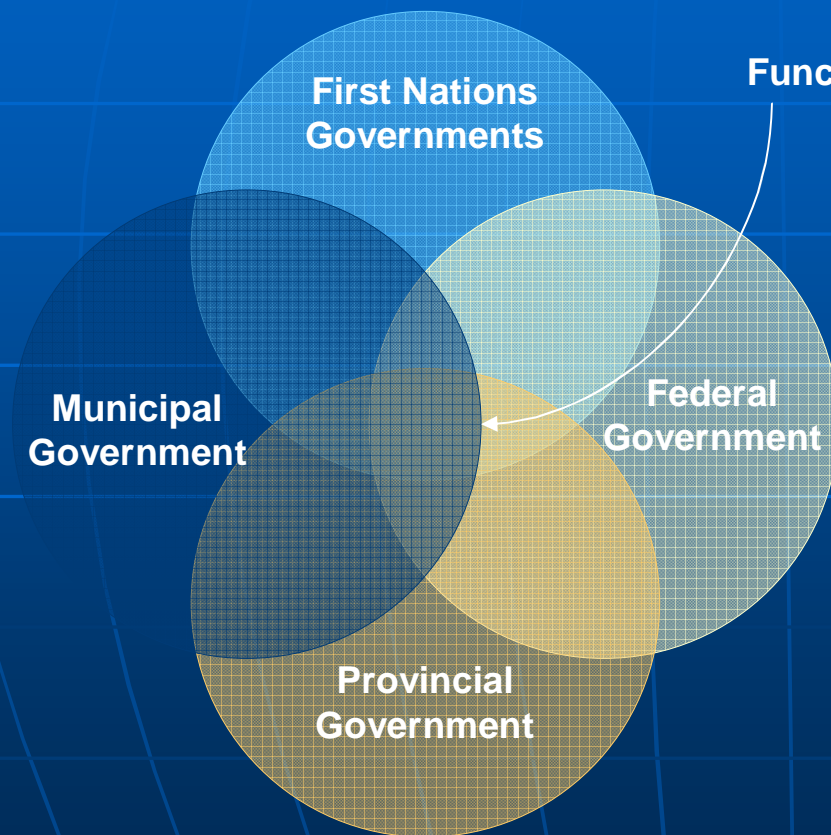
- In context
- Fraser River flood management: case study research
- Adaptability of flood management institutions
- Why does it matter?

# The problem: institutions in the context of climate change

- Interconnectedness and complexity
- Nature and scale of change
- What does sustainability mean in a context of continuous change?

*Planning for resilience*

# Overlapping jurisdictions



Functional Interdependencies

Cross-scale Institutions:

*Formal:*

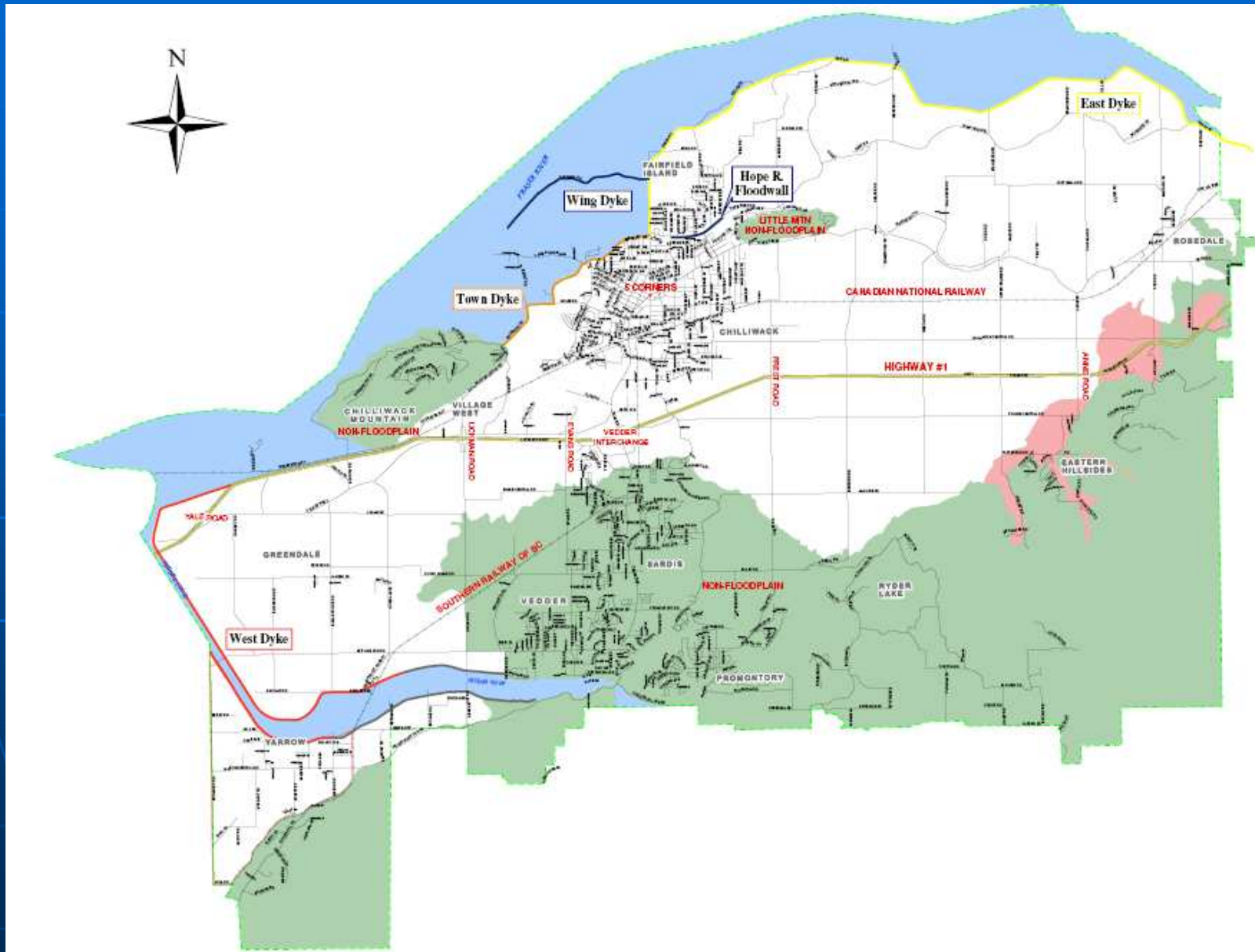
- Policies
- Laws
- Protocols

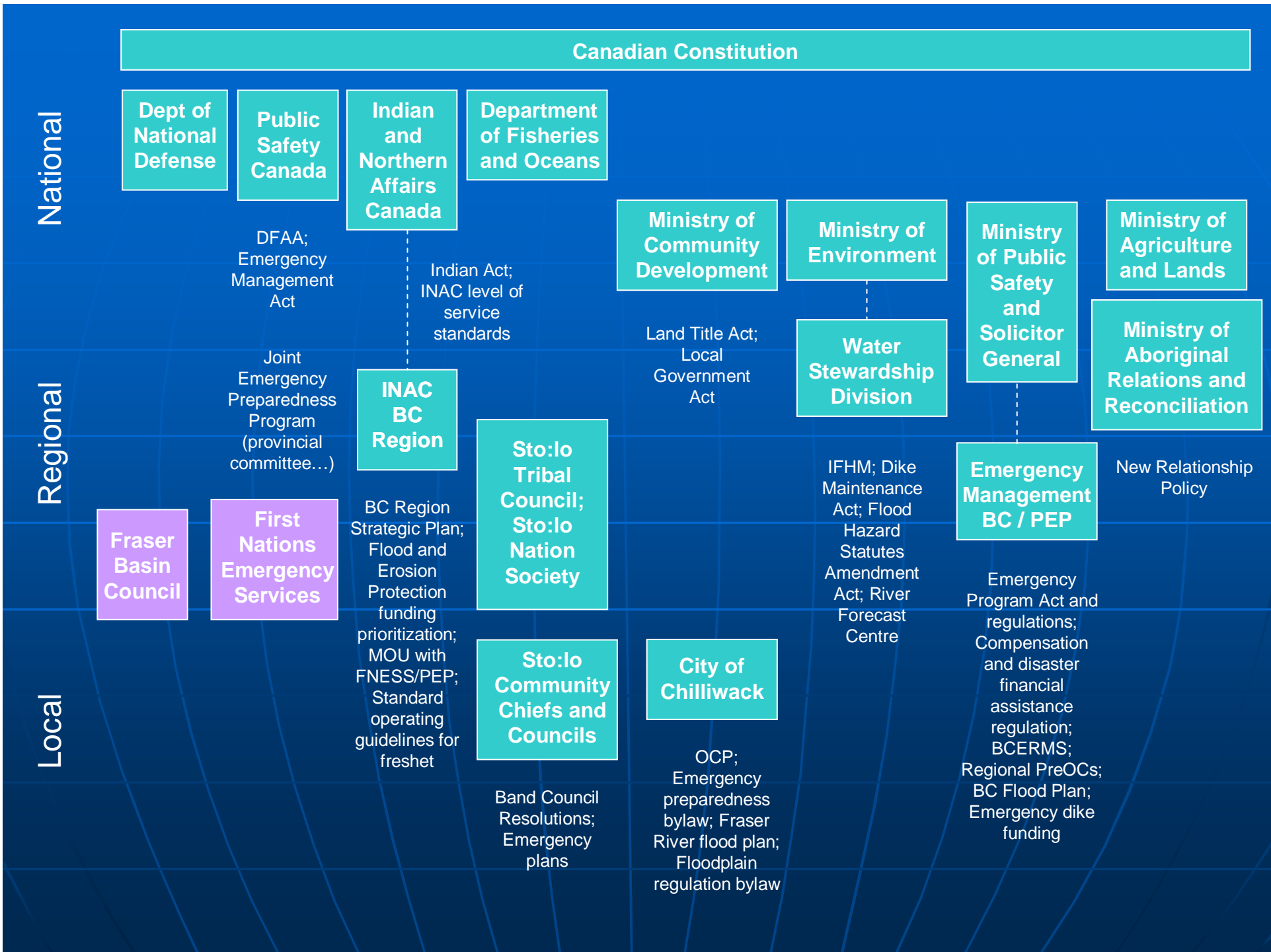
*Informal:*

- Relationships
- Networks
- Strategies

# The Case: Chilliwack and Sto:lo First Nations communities

- Focus on response to freshet 2007
  - Chilliwack / Sto:lo region
- Methods:
  - Interviews
  - Questionnaires
  - Intergovernmental meetings
  - Document review





## Structural Works

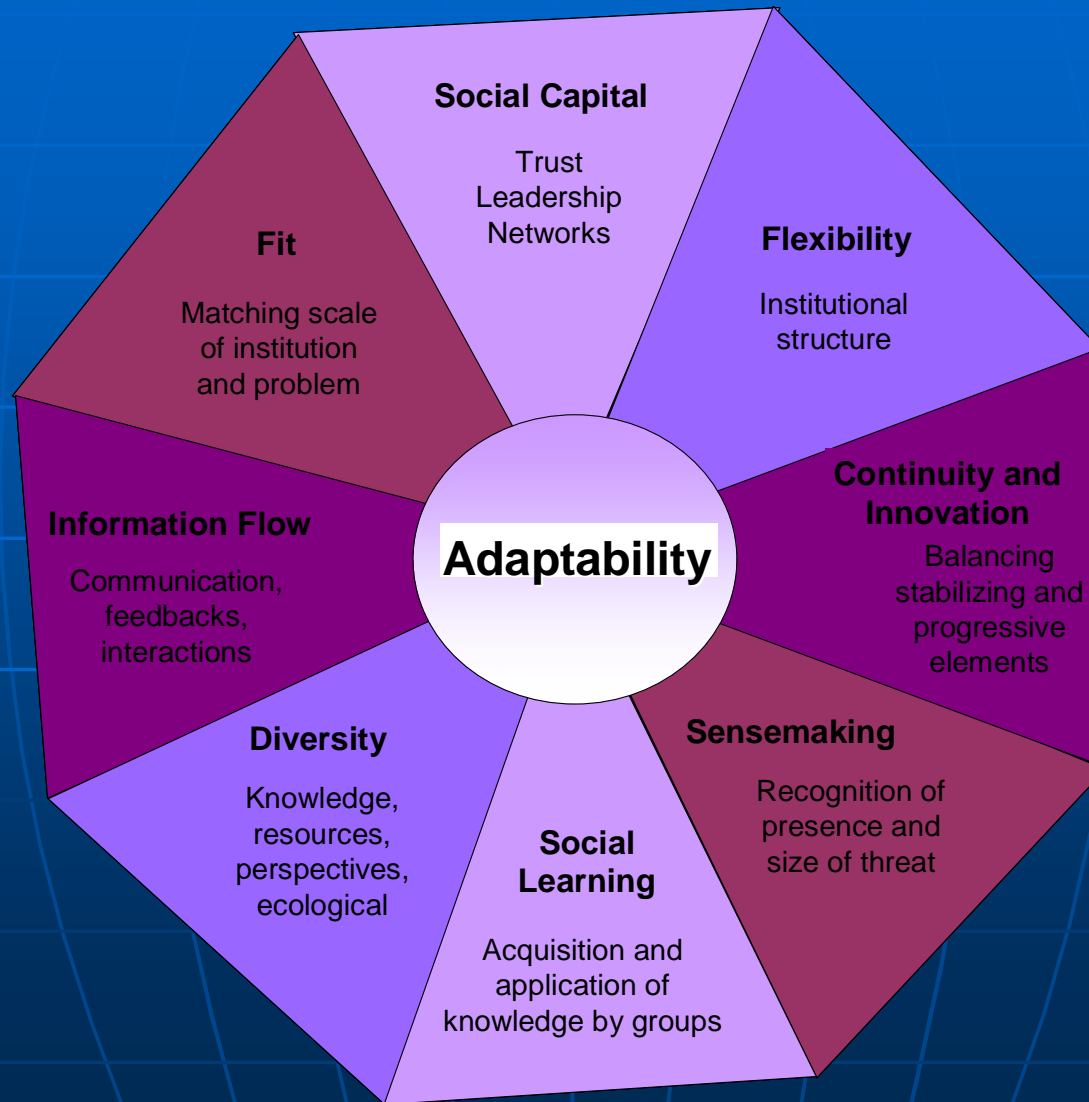
- Dike Maintenance Act
  - Approvals
  - Authority
  - O&M
  - Guidelines
  - Modelling / design levels
  - Monitoring / inspections
- Provincial funds
- Emergency Program Act / BC Flood Plan
- INAC funding / O&M
- Fraser Basin Council
- Chilliwack Flood Plan
- Municipal capital plan; funding sources
- Chilliwack – Sto:lo community arrangements

## Emergency Management

- BC Emergency Program Act (and regulations)
  - BCERMS / ICS
  - BC Flood Plan 2007
  - Funding
  - MOU (INAC/FNESS/PEP)
- Emergency Management Act (Canada)
- Joint Emergency Preparedness Program (\$)
- FNESS / FBC
- Chilliwack Flood Plan
- LGA (emergency powers)
- Sto:lo Emergency Plans
- Band Council Resolutions
- Relationships (agencies / local govts / FN – municipal)



# Adaptability Framework:



# Continuity – Innovation

“The art of progress is to preserve order amid change and to preserve change amid order.”

–Alfred North Whitehead

Emergency Management:  
combining structure and flexibility

- BCERMS
- BC Flood Plan
- Relationships

# Learning systems



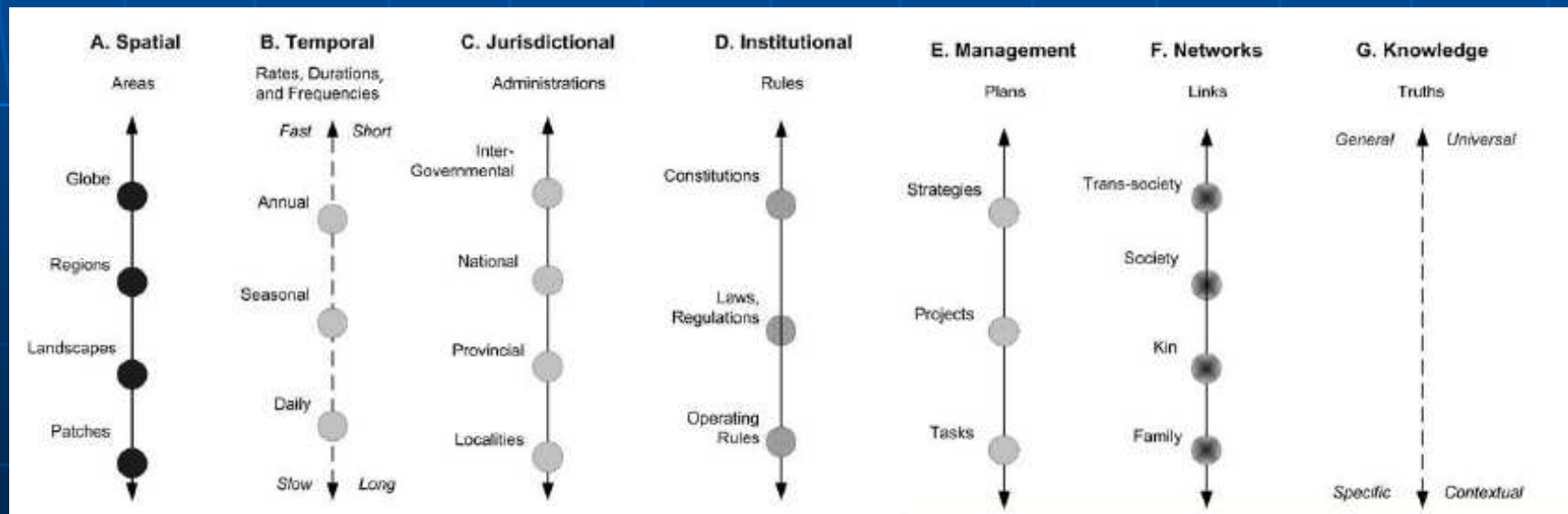
Consequence Management Series  
**BC Flood Plan**

2007 Edition



# Managing many boundaries

- Communication, translation
- Fraser Basin Council and First Nations Emergency Services



# Diversity

- Source of memory and innovation



# Why care?

“It is not the strongest of the species that survives, nor the most intelligent, but the one most responsive to change”

—Charles Darwin

# Thank You

Erica Crawford Boettcher  
MA Candidate (Planning), UBC  
[erica88@interchange.ubc.ca](mailto:erica88@interchange.ubc.ca)  
778-231-2367